

For Immediate Release
Contact: Media Center
(81-3)3563-6811

Bridgestone Introduces the BATTLAX SPORT TOURING T30 Series of Motorcycle Tires

~ Engineered for smooth handling, maximum performance and rider comfort ~

Tokyo (December 14, 2012)—Bridgestone Corporation today announced the February 1, 2013 global sales launch^{*1} of the BATTLAX SPORT TOURING T30 – a series of radial motorcycle sport touring tires. The series will be marketed in 10 sizes for front use and 13 sizes for rear use.

The Bridgestone BATTLAX SPORT TOURING T30 is a premium brand steeped in technology refined through the company's development of MotoGP race tires, and is designed for use on medium- to large-size motorcycles. Designed for smooth handling and rider enjoyment, the series will feature new patterns and a new compound^{*2}. The tires are designed for optimum road "hugging" properties and rigidity, together with enhanced lightness, "line" tracing, dry grip and other handling characteristics.

The BATTLAX series of on-road motorcycle tires is used in the FIM Road Racing World Championship MotoGP Class for which Bridgestone is an official supplier. The BATTLAX series features an extensive lineup that includes touring to racing patterns for use on small to large-size motorcycles.

Through the BATTLAX series and the company's other extensive lineup of motorcycle tires, Bridgestone continues to provide quality high performance motorcycle tires to the steadily growing ranks of riders.

*1: Japan sales launch from February 1, 2013. Successive marketing to follow in the United States, Europe, Latin America, Asia, Oceania and other regions.

*2: Front tires only.

An overview of this product series follows.

1. Product Name

BATTLAX SPORT TOURING T30



Front tire



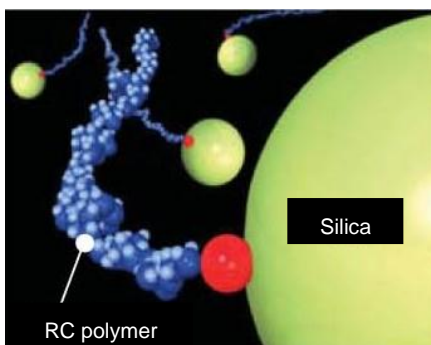
Rear tire

2. Technology Adopted & Product Characteristics

(1) New Compound Used In Front Tires

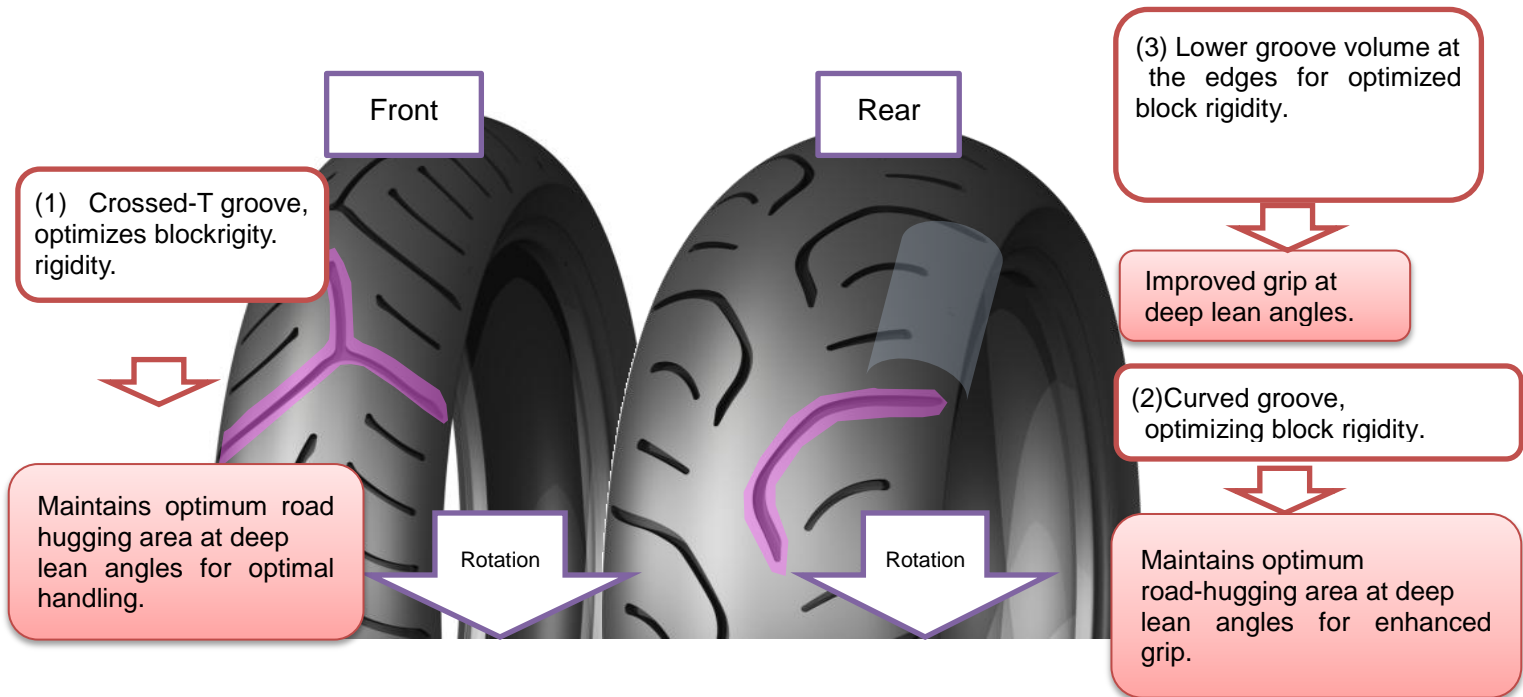
Bridgestone's extensive experience in the high performance sport of MotoGP led to the development of RC polymers (MC tire use), a compound that builds on the company's exclusive "NanoPro-Tech"^{*1} technology. This revolutionary technology delivers improved grip and performance in actual use temperature applications.

^{*1}: "NanoPro-Tech" is the collective name for the technology of working through molecular structure design and other means to exercise control over the fine structure of materials and generate required properties. It is an exclusive Bridgestone technology.



(2) New Patterns Adopted on Front and Rear Tires

Use of new patterns realizes outstanding handling and grip performance.



3. Available Sizes

Front tire
110/70ZR17 M/C (54W)
110/80ZR18 M/C (58W)
120/60ZR17 M/C (55W)
120/70ZR17 M/C (58W)
120/70ZR18 M/C (59W)
110/80R19 M/C 59V
* 120/70ZR17 M/C (58W)
* 120/70ZR18 M/C (59W)
110/70R17 M/C 54H
120/60R17 M/C 55H

Rear tire
150/70ZR17 M/C (69W)
160/60ZR17 M/C (69W)
160/60ZR18 M/C (70W)
160/70ZR17 M/C (73W)
170/60ZR17 M/C (72W)
180/55ZR17 M/C (73W)
190/50ZR17 M/C (73W)
190/55ZR17 M/C (75W)
* 170/60ZR17 M/C (72W)
* 180/55ZR17 M/C (73W)
* 190/55ZR17 M/C (75W)
160/60R17 M/C 69H
150/60R17 M/C 66H

* Sizes are GT spec (heavy vehicle specialized tuning specs), with front tires developed with a structure differing from standard product patterns. The rear tires also differ in structure in much the same way. For large-size touring motorcycles and other heavy-duty models using pannier cases (saddlebag-like carrying cases placed over sides of motorcycles), the result is improved handling, lightness and loading stability.

About Bridgestone Corporation:

Bridgestone Corporation, headquartered in Tokyo, is the world's largest tire and rubber company. In addition to tires for use in a wide variety of applications, it also manufactures a broad range of diversified products, which include industrial rubber and chemical products and sporting goods. Its products are sold in over 150 nations and territories around the world.